

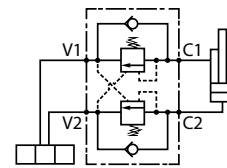
VÁLVULAS HIDRÁULICAS

Hydraulic valves
Valves hydrauliques
Valvole idrauliche

Overcenter D.E.



Double acting overcenter (in line)
Valve d'équilibrage double effet (en ligne)
Valvola Overcenter D.E.

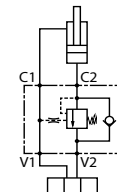


Referencia Part n°	ROSCA THREAD	CAUDAL MÁX. (l/min) MAX. FLOW (l/min)	PRESIÓN MÁX. (bar) MAX. PRESSURE (bar)	TARAJE (bar) SETTING (bar)	CAMPO REG. (bar) REG. RATE (bar)	€
FPO D 3/8 L 20	3/8" BSP	50	350	170	60 - 210	203,87
FPO D 3/8 L 35	3/8" BSP	50	350	280	80 - 350	203,87
FPO D 1/2 L 20	1/2" BSP	50	350	170	60 - 210	214,48
FPO D 1/2 L 35	1/2" BSP	50	350	280	80 - 350	214,48

Overcenter S.E. pilotaje interno



Single acting overcenter (line-internal pilot)
Valve d'équilibrage simple effet (en ligne-pilotage interne)
Valvola Overcenter S.E. pilotaggio interno

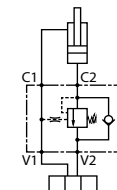


Referencia Part n°	ROSCA THREAD	CAUDAL MÁX. (l/min) MAX. FLOW (l/min)	PRESIÓN MÁX. (bar) MAX. PRESSURE (bar)	TARAJE (bar) SETTING (bar)	CAMPO REG. (bar) REG. RATE (bar)	€
FPO S 1/4 LP 20	1/4" BSP	50	350	170	60 - 210	122,07
FPO S 1/4 LP 35	1/4" BSP	50	350	280	80 - 350	122,07
FPO S 3/8 LP 20	3/8" BSP	50	350	170	60 - 210	128,18
FPO S 3/8 LP 35	3/8" BSP	50	350	280	80 - 350	128,18
FPO S 1/2 LP20	1/2" BSP	50	350	170	60 - 210	136,74
FPO S 1/2 LP35	1/2" BSP	50	350	280	80 - 350	136,74

Overcenter S.E. pilotaje interno 3/4"



Single acting overcenter internal pilot 3/4"
Valve d'équilibrage simple effet pilotage interne 3/4"
Valvola Overcenter S.E. pilotaggio interno 3/4"

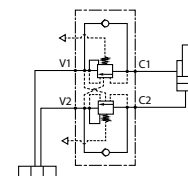


Referencia Part n°	ROSCA THREAD	CAUDAL MÁX. (l/min) MAX. FLOW (l/min)	PRESIÓN MÁX. (bar) MAX. PRESSURE (bar)	TARAJE (bar) SETTING (bar)	CAMPO REG. (bar) REG. RATE (bar)	€
FPOE120S3/4LPA35	3/4" BSP	120	250	350	120-350	191,13

Overcenter balanceada D. E.



Double acting balanced overcenter (line)
Valve d'équilibrage balancée double effet (en ligne)
Valvola Overcenter bilanciata D.E. (linea)

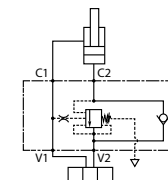


Referencia Part n°	ROSCA THREAD	CAUDAL MÁX. (l/min) MAX. FLOW (l/min)	PRESIÓN MÁX. (bar) MAX. PRESSURE (bar)	TARAJE (bar) SETTING (bar)	CAMPO REG. (bar) REG. RATE (bar)	€
FPOB D 3/8 L 20	3/8" BSP	50	350	170	60 - 210	293,39
FPOB D 3/8 L 35	3/8" BSP	50	350	280	80 - 350	293,39
FPOB D 1/2 L20	1/2" BSP	50	350	170	60 - 210	303,23
FPOB D 1/2 L35	1/2" BSP	50	350	280	80 - 350	303,23
FPOB 150 D 3/4 L35	3/4" BSP	150	350	280	100-350	430,75

Overcenter balanceada S.E. pilotaje interno



Single acting balanced overcenter (internal pilot)
Valve d'équilibrage balancée simple effet (en ligne- pilotage interne)
Valvola overcenter bilanciata S.E. pilotaggio interno



Referencia Part n°	ROSCA THREAD	CAUDAL MÁX. (l/min) MAX. FLOW (l/min)	PRESIÓN MÁX. (bar) MAX. PRESSURE (bar)	TARAJE (bar) SETTING (bar)	CAMPO REG. (bar) REG. RATE (bar)	€
FPOB S 1/4 LP 20	1/4" BSP	50	350	170	60 - 210	180,65
FPOB S 1/4 LP 35	1/4" BSP	50	350	280	80 - 350	180,65
FPOB S 3/8 LP 20	3/8" BSP	50	350	170	60 - 210	180,65
FPOB S 3/8 LP 35	3/8" BSP	50	350	280	80 - 350	180,65
FPOB S 1/2 LP20	1/2" BSP	50	350	170	60 - 210	190,47
FPOB S 1/2 LP35	1/2" BSP	50	350	280	80 - 350	190,47

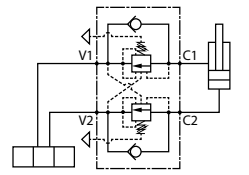
VÁLVULAS HIDRÁULICAS

Hydraulic valves
Valves hydrauliques
Valvole idrauliche

Overcenter balanceada D.E.



Double acting balanced overcenter
Valve d'équilibrage balancée double effet
Valvola Overcenter bilanciata D.E.

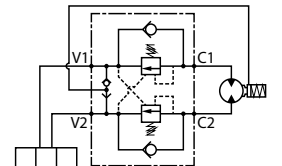


Referencia Part n°	ROSCA THREAD	CAUDAL MÁX. (l/min) MAX. FLOW (l/min)	PRESIÓN MÁX. (bar) MAX. PRESSURE (bar)	TARAJE (bar) SETTING (bar)	CAMPO REG. (bar) REG. RATE (bar)	€
FPOEB120D3/4LA20	3/4" BSP	120	250	200	60 - 210	390,71
FPOEB120D3/4LA35	3/4" BSP	120	250	250	120 - 350	390,71

Overcenter D.E con línea "U", pilotaje freno



Double acting overcenter line U with brake release port
Valves d'équilibrage double effet en ligne U avec pilotage frein
Valvola Overcenter D.E. con linea U con pilotaggio freno

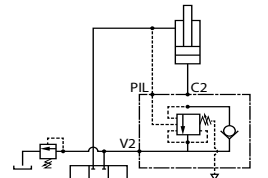


Referencia Part n°	ROSCA THREAD	CAUDAL MÁX.(l/min) MAX. FLOW (l/min)	PRESIÓN MÁX. (bar) MAX. PRESSURE (bar)	TARAJE (bar) SETTING (bar)	CAMPO REG. (bar) REG. RATE (bar)	€
FPO50D3/8LU20	3/8" BSP 1/4" BSP	50	350	170	60 - 210	215,49
FPO50D3/8LU35	3/8" BSP 1/4" BSP	50	350	280	80 - 350	215,49
FPO50D1/2LU20	1/2" BSP 1/4" BSP	50	350	170	60 - 210	226,09
FPO50D1/2LU35	1/2" BSP 1/4" BSP	50	350	280	80 - 350	226,09

Overcenter balanceada S.E. pilotaje externo



Single acting balanced overcenter (external pilot)
Valve d'équilibrage balancée simple effet (pilotage externe)
Valvola Overcenter bilanciata S.E. pilotaggio esterno

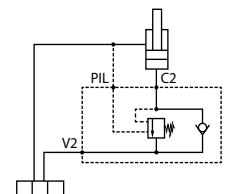


Referencia Part n°	ROSCA THREAD	CAUDAL MÁX.(l/min) MAX. FLOW (l/min)	PRESIÓN MÁX. (bar) MAX. PRESSURE (bar)	TARAJE (bar) SETTING (bar)	CAMPO REG. (bar) REG. RATE (bar)	€
FPOB S 1/4 L20	1/4" BSP 1/4" BSP	50	350	170	60 - 210	173,35
FPOB S 1/4 L35	1/4" BSP 1/4" BSP	50	350	280	80 - 350	173,35
FPOB S 3/8 L20	3/8" BSP 1/4" BSP	50	350	170	60 - 210	173,35
FPOB S 3/8 L35	3/8" BSP 1/4" BSP	50	350	280	80 - 350	173,35
FPOB S 1/2 L20	1/2" BSP 1/4" BSP	50	350	170	60 - 210	188,01
FPOB S 1/2 L35	1/2" BSP 1/4" BSP	50	350	280	80 - 350	188,01

Overcenter S.E. pilotaje externo



Single acting overcenter external pilot
Valve d'équilibrage simple effet pilotage externe
Valvola Overcenter S.E. pilotaggio esterno

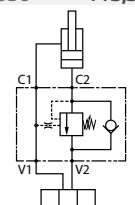


Referencia Part n°	ROSCA THREAD	CAUDAL MÁX.(l/min) MAX. FLOW (l/min)	PRESIÓN MÁX. (bar) MAX. PRESSURE (bar)	TARAJE (bar) SETTING (bar)	CAMPO REG. (bar) REG. RATE (bar)	€
FPO S 1/4 L20	1/4" BSP 1/4" BSP	50	350	170	60 - 210	107,44
FPO S 1/4 L35	1/4" BSP 1/4" BSP	50	350	280	80 - 350	107,44
FPO S 3/8 L20	3/8" BSP 1/4" BSP	50	350	170	60 - 210	107,44
FPO S 3/8 L35	3/8" BSP 1/4" BSP	50	350	280	80 - 350	107,44
FPO S 1/2 L20	1/2" BSP 1/4" BSP	50	350	170	60 - 210	113,53
FPO S 1/2 L35	1/2" BSP 1/4" BSP	50	350	280	80 - 350	113,53

Overcenter S.E. pilotaje interno



Single acting overcenter internal pilot
Valves d'équilibrage simple effet pilotage interne
Valvola Overcenter S.E. pilotaggio interno



Referencia Part n°	ROSCA THREAD	CAUDAL MÁX.(l/min) MAX. FLOW (l/min)	PRESIÓN MÁX. (bar) MAX. PRESSURE (bar)	TARAJE (bar) SETTING (bar)	CAMPO REG. (bar) REG. RATE (bar)	€
FPOE70S1/2LPA20	1/2" BSP	70	350	200	60-210	138,35
FPOE70S1/2LPA35	1/2" BSP	70	350	350	120-350	138,35

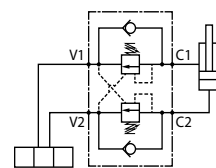
VÁLVULAS HIDRÁULICAS

Hydraulic valves
Valves hydrauliques
Valvole idrauliche

Overcenter D.E. (en línea)



Double acting overcenter
Valve d'équilibrage double effet
Valvola Overcenter D.E. (in linea)

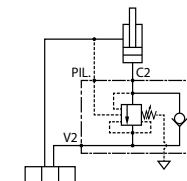


Referencia Part n°	ROSCA THREAD	CAUDAL MÁX.(l/min) MAX. FLOW (l/min)	PRESIÓN MÁX. (bar) MAX. PRESSURE (bar)	TARAJE (bar) SETTING (bar)	CAMPO REG. (bar) REG. RATE (bar)	€
FPOE40D3/8LA20	3/8" BSP	40	350	200	60-210	201,45
FPOE40D3/8LA35	3/8" BSP	40	350	250	120-350	201,45
FPOE120D3/4LA20	3/4" BSP	120	350	200	60-210	331,72
FPOE120D3/4LA35	3/4" BSP	120	350	250	120-350	331,72

Overcenter balanceada S.E. pilotaje externo



Single acting balanced overcenter external pilot
Valve d'équilibrage balancée simple effet pilotage externe
Valvola Overcenter bilanciata S.E. pilotaggio esterno

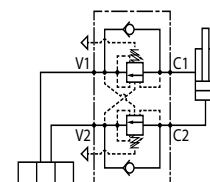


Referencia Part n°	ROSCA THREAD	CAUDAL MÁX.(l/min) MAX. FLOW (l/min)	PRESIÓN MÁX. (bar) MAX. PRESSURE (bar)	TARAJE (bar) SETTING (bar)	CAMPO REG. (bar) REG. RATE (bar)	€
FPOB50S3/8L20	3/8" BSP 1/4" BSP	50	350	170	60-210	173,35
FPOB50S3/8L35	3/8" BSP 1/4" BSP	50	350	280	80-350	173,35
FPOB50S1/2L20	1/2" BSP 1/4" BSP	50	350	170	60-210	188,01
FPOB50S1/2L35	1/2" BSP 1/4" BSP	50	350	280	80-350	188,01

Overcenter balanceada D.E.



Double acting balanced overcenter
Valve d'équilibrage balancée double effet
Valvola Overcenter bilanciata D.E.



Referencia Part n°	ROSCA THREAD	CAUDAL MÁX.(l/min) MAX. FLOW (l/min)	PRESIÓN MÁX. (bar) MAX. PRESSURE (bar)	TARAJE (bar) SETTING (bar)	CAMPO REG. (bar) REG. RATE (bar)	€
FPOEB70D1/2LA20	1/2" BSP	70	250	200	60-210	255,06
FPOEB70D1/2LA35	1/2" BSP	70	250	250	80-350	255,06